

Geocaching Software Training

The following notes summarize the topics that were covered during the Geocaching Software Training event, Thursday, November 15, 2007.

Presenters:

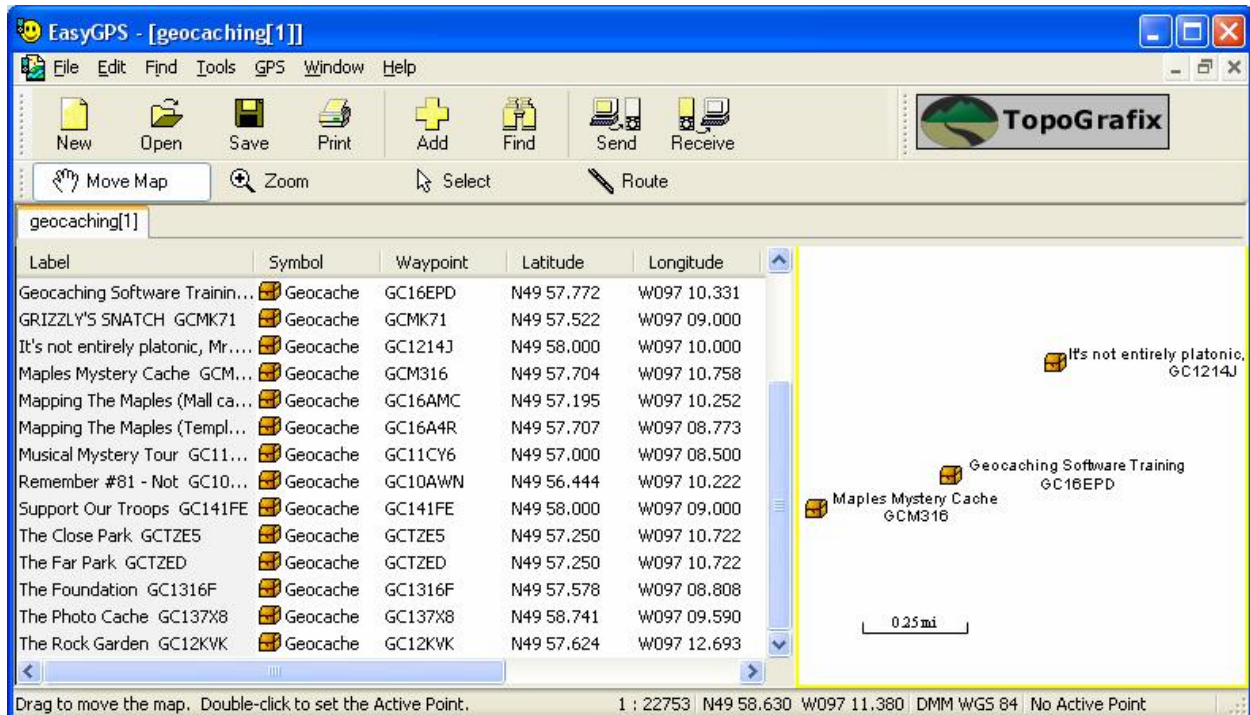
Tim Turner (TurdleEggs), President, MBGA
Sandra Forbes (junglehair), Vice-President, MBGA

Topics:

- EasyGPS
- Send to GPS button
- Premium Member Features
- Pocket Queries
- Bookmarks
- Notifications
- Caches Along a Route
- Palm vs. Pocket PC
- GSAK
- CacheMate
- Customization to Garmin GPSMap 60 series
- Plucker
- GPXView
- Loading Additional Maps
- Google Earth

EasyGPS

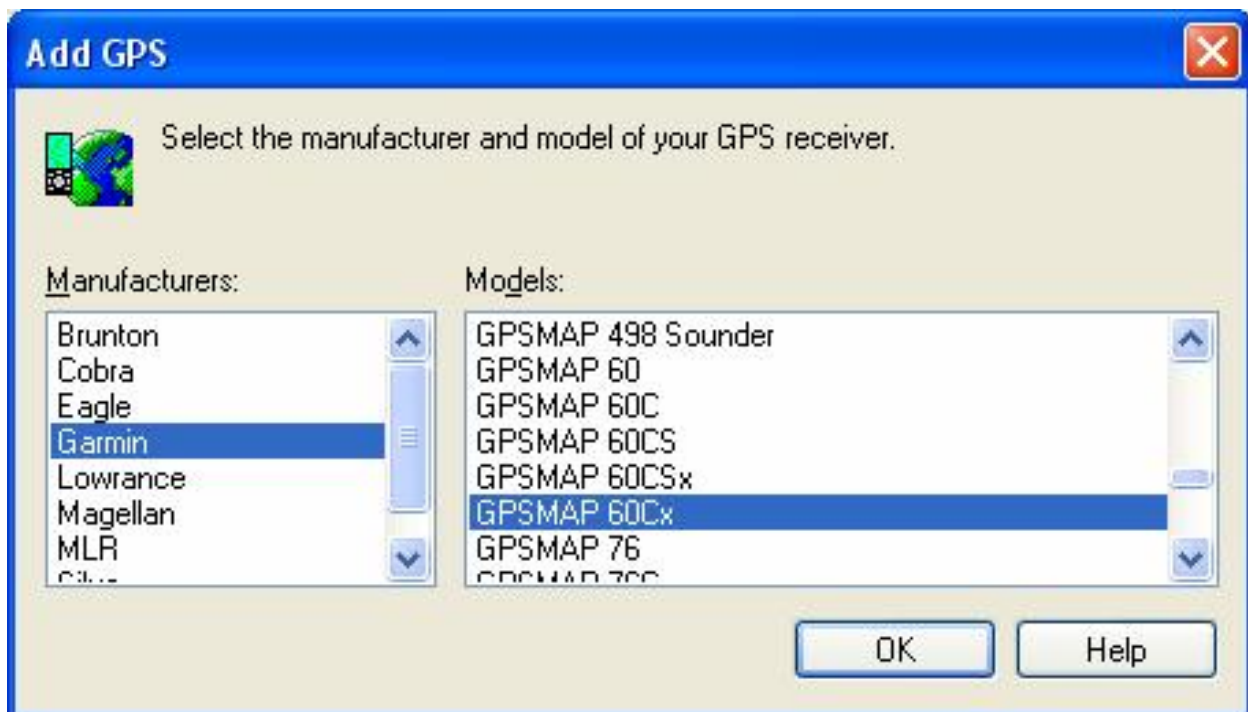
- EasyGPS is a simple (and free) program to load waypoints into your GPS
- Download from www.easygps.com



- Set preferences for your GPS
 - Click **Edit/Preferences...**
 - Click **Add GPS** button

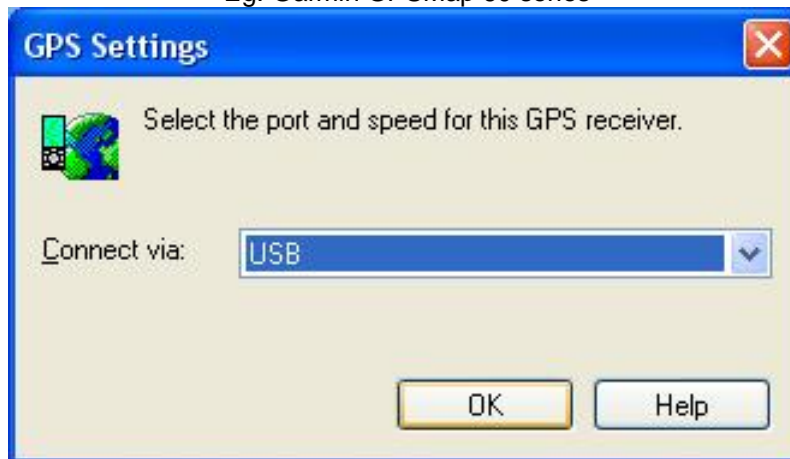


- Select the Manufacturer and Model
- Click **OK**

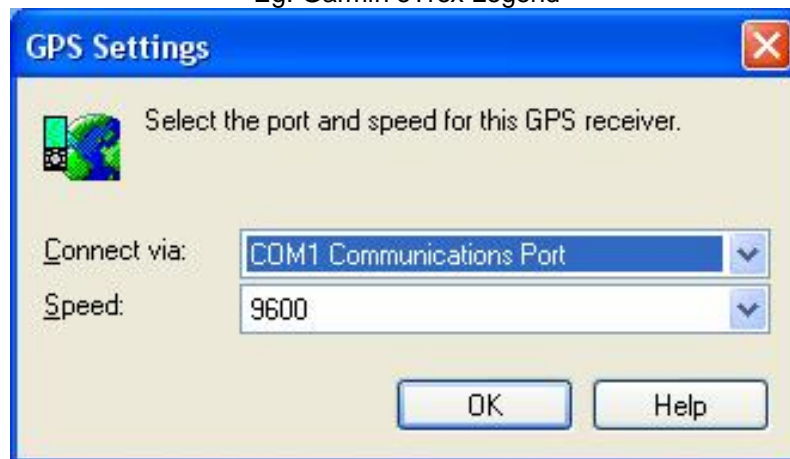


- Select type of Connection

Eg. Garmin GPSMap 60 series



Eg. Garmin eTrex Legend

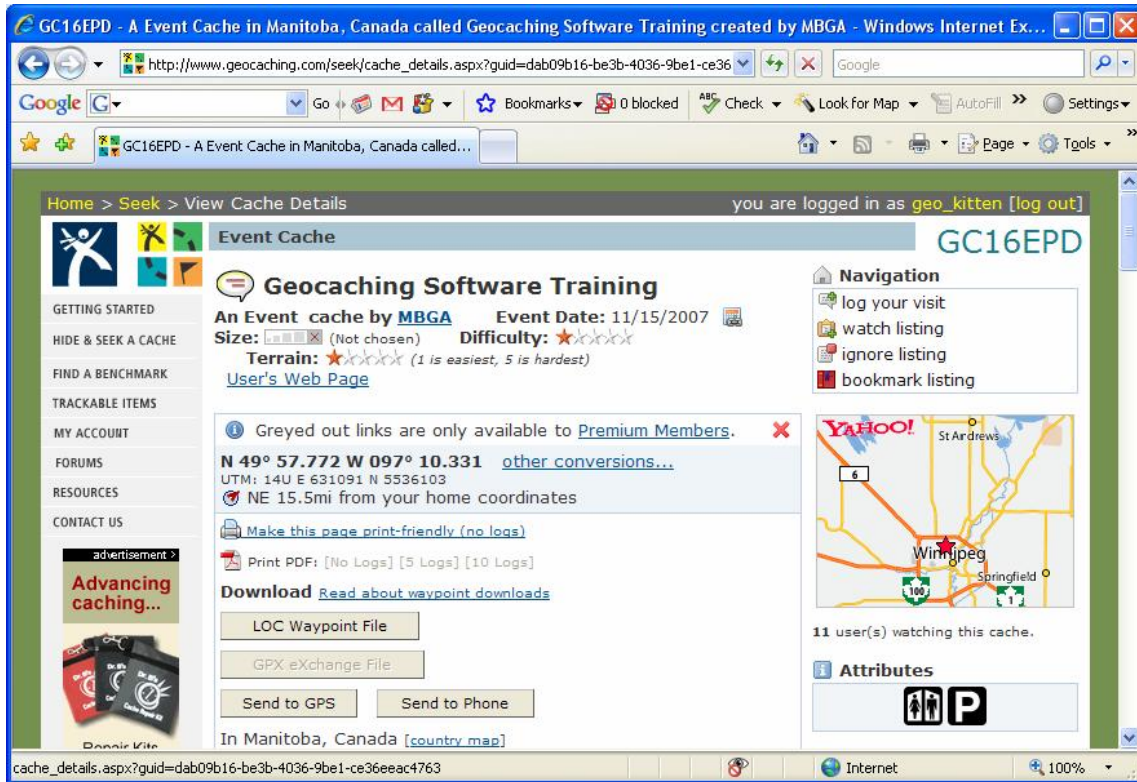


- To test that everything is set up properly:
 - Click GPS/Display GPS Information

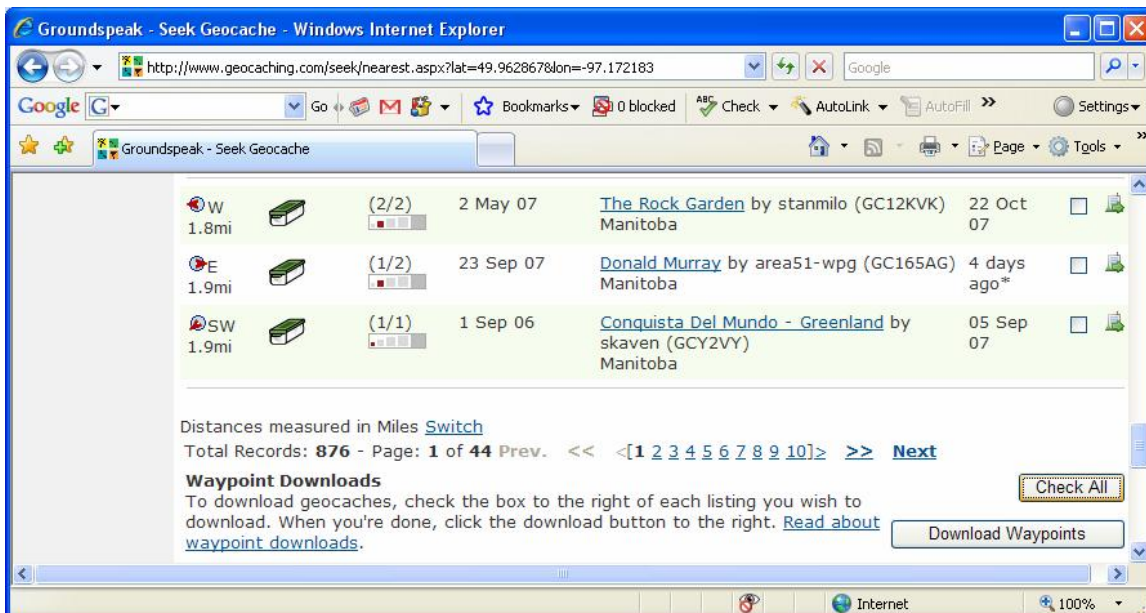


- If you get an error, make sure the cables are connected properly and the GPS unit is turned on. If you are connecting via a serial cable, try changing the "Connect via" settings to Com2.

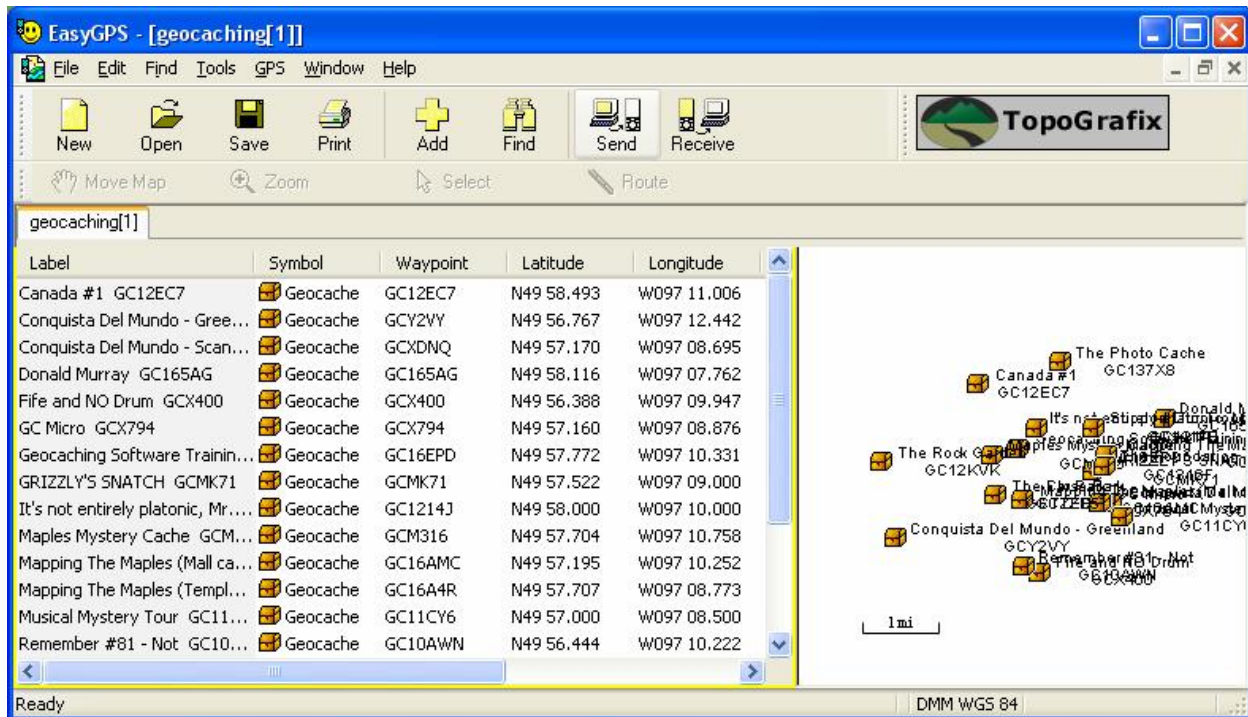
- You can now use EasyGPS to download individual cache pages by clicking on the LOC Waypoint File.
 - The first time you try to download GPX or LOC files from Geocaching.com, it will prompt you to agree to their Waypoint Licence Agreement
 - If you are a premium member, you also have the option to download the file in GPX format (to view the cache page on a handheld device such as a Palm or Pocket PC)



- You can also download up to 20 waypoints at a time from the nearest cache page
 - Go to the bottom of the page and click the **Check All** button, then click **Download Waypoints**



- If you are a Premium Member, you can use EasyGPS to view the results of your pocket query, either in GPX or LOC format
 - Download the results of your pocket query from your email and unzip if necessary
 - From EasyGPS, click the **Open** button and browse to your LOC or GPX file. You can also just double-click on the LOC or GPX file and it will open it in EasyGPS.
- Click the Send button and the waypoints will be transferred to your GPS.



- You can also use EasyGPS to transfer the waypoints from your GPS to your computer. This does not clear them off the GPS however. To do that, you need to go through the menu options on your GPS.

Send to GPS Button

- For Garmin users, there is now a shortcut on the cache pages to send the waypoint directly to your GPS.
- Quick way to send a single waypoint to the GPS
- Need to download Plugin first
- Click **Send to GPS** – it will check if plugin is available, if not it will direct you to the download page.
- Support for Windows:
 - Supports Windows 2000 and later OS, including Windows Vista.
 - Supports Internet Explorer 6+ or Firefox 1.5+.
- Support for Mac:
 - Intel-based or PowerPC G3 or later Mac
 - OS 10.4 or later
 - Firefox 2.0+ or Safari 2.0+

Geocaching Software Training

An Event cache by **MBGA** Event Date: 11/15/2007

Size: (Not chosen) Difficulty: ★☆☆☆☆ Terr

[User's Web Page](#)

N 49° 57.772 W 097° 10.331 [other conversions...](#)

UTM: 14U E 631091 N 5536103

N 6mi from your home coordinates

[Make this page print-friendly \(no logs\)](#)

Print PDF: [\[No Logs\]](#) [\[5 Logs\]](#) [\[10 Logs\]](#)

Download [Read about waypoint downloads](#)

LOC Waypoint File

GPX eXchange File

Send to GPS Send to Phone

Premium Member Features

- Pocket Queries
- Bookmarks
- Notifications
- Caches along a Route
- Premium Membership is available for \$30/year.

Pocket Queries

- From the My Account page, click the link to Build Pocket Queries
- Click the “Create a New Query” button
- Fill out the form and click the “Submit Information” button
- You can use this to filter out only the types of caches you are interested
 - For example, all traditional caches, size regular, with a terrain less than 3 and a difficulty less than 4, that is active, and within 10 miles of my home coordinates

New Pocket Query [return to list](#)

Query Name

Days to Generate (Pacific Standard Time)

Sun
 Mon
 Tue
 Wed
 Thu
 Fri
 Sat

Choose how often your query should run:

- Uncheck the day of the week after the query runs
- Run this query every week on the days checked
- Run this query once then delete it

Show me caches

Of

- Any type
- Selected types:
 - Traditional Cache
 - Multi-cache
 - Virtual Cache
 - Letterbox Hybrid
 - Event Cache
 - Unknown Cache
 - Project APE Cache
 - Webcam Cache
 - Cache In Trash Out Event
 - Earthcache
 - Mega-Event Cache
 - GPS Adventures Exhibits

- Any container
- Selected containers:

- Small Large Micro
- Other (see description) Regular Unknown
- Virtual

That (and)

- | | |
|---|---|
| <input checked="" type="checkbox"/> I haven't found | <input type="checkbox"/> I have found |
| <input checked="" type="checkbox"/> I don't own | <input type="checkbox"/> I own |
| <input type="checkbox"/> Are available to all users | <input type="checkbox"/> Are for members only |
| <input type="checkbox"/> Are not on my ignore list | <input type="checkbox"/> Are on my watch list |
| <input type="checkbox"/> Found in the last 7 days | <input type="checkbox"/> Have not been found |
| <input type="checkbox"/> Have Travel Bugs | <input type="checkbox"/> Updated in the last 7 days |
| <input type="checkbox"/> Is Not Active | <input checked="" type="checkbox"/> Is Active |

And

- Terrain is
- Difficulty is

Within None Selected

- Countries
- Afghanistan
 - Aland Islands
 - Albania
 - Algeria
 - American Samoa

- States / Provinces
- Acre
 - Alabama
 - Alagoas
 - Alaska
 - Alberta

From Origin None Selected

- My Home Coordinates
- Waypoint Name
- Postal Code
- By Coordinates

Degrees and minutes (MinDec) ▼

N ▼ 00 ° 00.000 ,

W ▼ 000 ° 00.000 ,

Within radius of

mi km

Placed during None Selected

the last week ▼

between / / and / /

Attributes to Include


[\(click to include/exclude certain attributes\)](#)




Attributes to Exclude

[\(click to include/exclude certain attributes\)](#)



Output to  this account's email address

 alternate email

In the format [details](#)

Compress files into *.zip format (recommended)

- Be careful, when you are selecting your options, that you don't filter out everything. For example, if you check that you want to see all the caches that "I haven't found" and "I have found" it will not find any caches that match that criteria. It is not possible to have a cache that you have both found and not found. If you want to see all caches, whether you have found them or not, then don't click either box.

Bookmarks

- Bookmarks are a handy way to keep a list of caches.
- People often create a bookmark list of their favourite caches, or "must do" caches in an area
- You can create a Pocket Query from your Bookmark list
- You can view the bookmarked caches in Google Earth

Notifications

- Be the first to be notified about new caches
- Set up a notification for each cache type
- Notifications will be sent to an email address
- Notifications can also be sent as text message to cell phone
 - 2045551234@text.mts.net (for MTS cellular customers)
 - Your cell provider should be able to tell you the address to use for sending emails to your phone

Name

Type to Watch

Found it Retract Listing
 Didn't find it Temporarily Disable Listing
 Archive Enable Listing
 Unarchive Update Coordinates
 Publish Listing Needs Maintenance

What is the point of origin for your subscription?

° ' Look up postal code:
 ° '

[\[Map It\]](#)

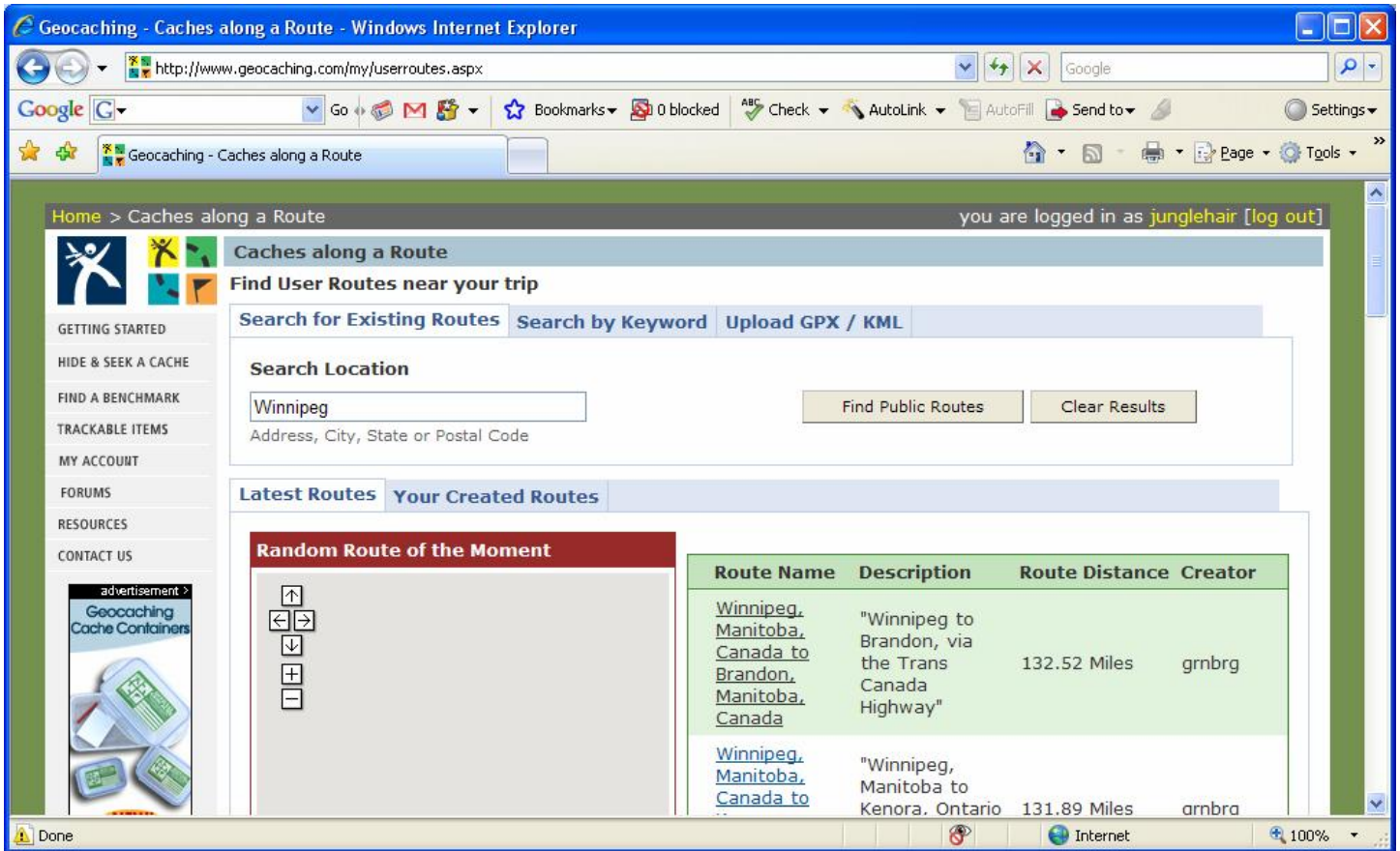
Distance in Miles:

Send to another email address:
(leave blank if account address)

Enable notifications (uncheck to pause)

Caches Along a Route

- Great tool for planning road trips
- Finds all caches within a specified distance along a given route (eg. Winnipeg to Brandon)
- Search for existing routes
- Can create your own route using Google Earth
 - Instructions are listed at bottom of the Caches Along a Route page



- Select the route you want, then click Create Pocket Query to find all the caches along it.

Route Information

Name:	Winnipeg, Manitoba, Canada to Brandon, Manitoba, Canada
Creator:	grnbrg
Description:	Winnipeg to Brandon, via the Trans Canada Highway
Keywords:	Brandon, Canada, Highway, Manitoba, TCH, Trans, Trans Canada Highway, Winnipeg
	Route is listed in Directory
	Create Pocket Query
	Create GPX of Route or KML of Route

Route Stats

Distance:	132.52 miles
Route Turns:	26

Route Pocket Query Name:
[View Associated Route](#)

User Route Query Options:

Days to Generate (Pacific Standard Time)

Sun Mon Tue Wed Thu Fri Sat

Choose how often your query should run:

- Uncheck the day of the week after the query runs
- Run this query every week on the days checked
- Run this query once then delete it

Search on either side of the Route. (max of 5 miles/8 km)

Show me **caches** (max of 500 results)

Of:

- Any Cache Type**
- Traditional Cache Multi-cache Virtual Cache
 - Letterbox Hybrid Event Cache Unknown Cache
 - Project APE Cache Webcam Cache Cache In Trash Out Event
 - Earthcache Mega-Event Cache GPS Adventures Exhibits

Placed in:

- Any Container Type**
- Small Large Micro
 - Other (see description) Regular Unknown
 - Virtual

Filter Options

- I haven't found I have found I don't own
- I own Are available to all users Are for members only
- Are not on my ignore list Are on my watch list Found in the last 7 days
- Have not been found Have Travel Bugs Updated in the last 7 days
- Is Not Active Is Active

Paperless Caching: Palm vs. Pocket PC

- Two main types of PDAs available – Palm / Pocket PC
- The software you run will depend on which operating system you are using, much like Windows vs. Mac
- Palm: CacheMate, Plucker
- Pocket PC: GPXView, GPXSonar,
 - CacheMate has apparently created a version of their software for Pocket PC as well

Palm/Pocket PC Software Links

- CacheMate (\$8.00)
 - <http://www.smittyware.com/palm/cachemate/> (Palm)
 - <http://www.smittyware.com/ppc/cachemate/> (Pocket PC)
- Plucker (Free)
 - <http://desktop.plkr.org/>
- GPXView (free, suggested donation of \$10)
 - <http://strandberg.org/gpxview/download.asp>
- GPXSonar (free, no longer supported)
 - <http://gpxsonar.homeip.net>

Geocaching Swiss Army Knife (GSAK) / CacheMate

- Refer to the **Waypoint Management: Loading Pocket Queries into GSAK from File** handout

Paperless Caching with Plucker

- Refer to the Plucker handout

GPXView

- Runs on Pocket PC devices
- Very simple to use
- Download the program and run the executable to load the software on the Pocket PC
 - <http://strandberg.org/gpxview/download.asp>
- Copy the GPX file to Pocket PC
- That's it!

Loading Additional Maps

- Mapping software is specific to the manufacturer and model of GPS you own
 - Garmin: MapSource City Navigator, North America
MapSource TOPO Canada
 - Magellan: MapSend DirectRoute
MapSend TOPO
 - Lowrance: MapCreate
- Make sure the software you purchase is compatible with your GPS receiver.

- For some software, you have the option of installing the program on your desktop computer and then transferring the files you want to the GPS.
- Sometimes the maps are available on memory cards that can just be inserted into the GPS
- The additional mapping gives you street level detail, may provide routing capabilities depending on the software and model of GPS, and Point of Interest such as restaurants, accommodations, fuel, etc.

Google Earth

There are two options for viewing geocaching information in Google Earth:

- Networked KML
 - Download the Geocache browser in Google Earth (link available from your My Account page.)
 - Open Google Earth and browse to the file you downloaded
 - It will save the information in your Temporary Places, but when you close Google Earth it will ask if you want to save it to My Places
 - This allows you to zoom in on Google Earth and see the geocaches in that area
 - It will only show a maximum of 150 caches at a time. You may need to zoom in further for the geocaches to appear
- Downloaded KML file
 - Bookmark lists and travelbug pages give you the option to download a KML file to view in Google Earth
 - Download the file
 - Open Google Earth and browse to the file you downloaded
 - For Bookmark lists, it will show the location of each of the caches in your bookmark list using the proper symbol for traditional caches, multicaches, etc.
 - For travelbug pages, it will show the path for that bug's travels

Please note that the coordinates used in Google Earth are only an approximation and can be up to 100 ft from the actual location. Do not use the coordinates in Google Earth for cache hunting. It is merely a viewing tool for getting a general idea of the cache location.