



Manitoba Geocaching Association

[www.mbgeocaching.ca](http://www.mbgeocaching.ca)

# Geocaching Software Training

Tim Turner (TurdleEggs)

*GeoCaching Swiss Army Knife (GSAK)*

*CacheMate*

*Custom Icons*



Manitoba Geocaching Association

[www.mbgeocaching.ca](http://www.mbgeocaching.ca)

## Geocaching Swiss Army Knife (GSAK)

- GSAK is a database of GeoCaches (waypoints) that you may use to view, manage and send to your GPSr and PDA
- GSAK imports descriptions and logs from Pocket Queries and stores them in a database on your PC
  - Note: You must be a premium member of Geocaching.com to create Pocket Queries
  - GSAK is FREE to download and use, but after 21 days of unregistered there is a nag screen. It is US\$25 to register

<http://www.gsak.net/>



Manitoba Geocaching Association

[www.mbgeocaching.ca](http://www.mbgeocaching.ca)

# Geocaching Swiss Army Knife (GSAK)

## GSAK Benefits:

- Quickly sort through hundreds of GeoCaches to identify the ones you're interested in finding
- Use SmartNames instead of GCXXXX
- Use customized icons to identify Traditional, Multi, Mystery, Found, Unfound, Archived, etc. caches on your GPSr
- Have the decrypted hint on your GPSr
- Simplify the process of loading Pocket Queries
- Track your FTF's
- Report on your stats
- Go paperless!
- GSAK is very popular and very well supported
- Spend less time on the computer and more time caching!



Manitoba Geocaching Association

[www.mbgeocaching.ca](http://www.mbgeocaching.ca)

## Geocaching Swiss Army Knife (GSAK)

*GSAK has a very busy interface!*

*GSAK is highly customizable!*

*GSAK does a lot!*

*GSAK can be intimidating!*

*We can tame GSAK 😊*



# Manitoba Geocaching Association

www.mbgeocaching.ca

## Geocaching Swiss Army Knife (GSAK)

GSAK 7.1.2.30 DataBase: TurtleEggs (Registered to: TIMOTHY TURNER)

File Search User Flags View Centre Point Waypoint Database GPS Macro Tools Help

Lock First Code Search Name Search Split screen format Select a saved filter Database Locations Views  
 Column Full display NONE TurtleEggs ..Not active Default

Code	Smart Name	lg	Waypoint Name	Last Found	Kms	Placed By	Container	Diff	Term	State	Found by me	ff	P
GCYKF3	OldPostOfficeP		Old Post Office Park Cache	10/11/2007	0.00	foxfiresyxx	Small	1.5	2.0	Manitoba		<input type="checkbox"/>	3
GCMN8XV	GivenTheGears		Given the Gears	22/09/2007	0.38	skaven	Micro	1.0	1.0	Manitoba	11/10/2005	<input type="checkbox"/>	2
GCXDN9	SouthernEurope		Conquista Del Mundo - Southern Euro	09/10/2007	0.41	skaven	Micro	2.0	1.5	Manitoba	18/08/2006	<input type="checkbox"/>	3
GC16VDV	WeRemember		We Remember	12/11/2007	0.41	Z'timats, Z'ad and "Butter	Small	1.5	1.0	Manitoba		<input type="checkbox"/>	1
GCMNW4	PatriotGameWin		Patriot Game (Winter-friendly)	30/09/2007	0.63	1queenand4jokers	Small	2.5	2.0	Manitoba	26/09/2005	<input type="checkbox"/>	2
GCMNW4	PatriotGameJu1		Patriot Game (July 1st edition)		0.64		Unknown	1.0	1.0	Nil		<input type="checkbox"/>	2
GC6C18	FirstPostWinni		First Post - Winnipeg	11/11/2007	0.66	outforthehunt	Virtual	1.5	1.0	Manitoba	11/10/2005	<input type="checkbox"/>	0
GC16DFD	TwinBridgeMult		Twin Bridge Multi Cache	10/11/2007	0.71	foxfiresyxx	Small	1.5	1.5	Manitoba		<input type="checkbox"/>	0
GCTFWP	MessageInABott		Message in a Bottle Opener		0.77		Unknown	1.0	1.0	Nil		<input type="checkbox"/>	2
GC136C7	MuralMuralOnTh		Mural Mural on the Wall	07/10/2007	0.78	junlehair	Small	2.0	1.5	Manitoba	27/05/2007	<input checked="" type="checkbox"/>	2
GCT477	BarkingUpTheRi		Barking up the right tree.	07/11/2007	0.87	cachegrab	Micro	1.5	1.5	Manitoba	26/01/2006	<input type="checkbox"/>	2
ME136C7	MuralE		Mural E		0.88		Unknown	1.0	1.0	Nil		<input type="checkbox"/>	2
GCY1AX	CacheBack		Cache Back	03/10/2007	0.89	Z'timats & Z'ad	Other	1.0	1.0	Manitoba	10/04/2007	<input type="checkbox"/>	2
GC11PVP	GiveMyRegardsT		Give My Regards to Broadway	04/11/2007	0.90	MBeans	Regular	1.5	1.5	Manitoba	01/05/2007	<input type="checkbox"/>	2
F112TPF	Wpt1		Wpt 1		0.90		Unknown	1.0	1.0	Nil		<input type="checkbox"/>	1
GCVPMK	RichardsonPark		Richardson Park	07/11/2007	0.93	a2g3	Small	1.0	1.0	Manitoba	01/05/2006	<input type="checkbox"/>	2
GCN847	SchoolView		School View	29/07/2005	0.93	skaven	Micro	1.5	1.5	Manitoba		<input type="checkbox"/>	2
GCVN4E	EndOfTheRiverL		End of the River Line	10/10/2007	0.94	a2g3	Small	2.0	1.0	Manitoba	01/05/2006	<input type="checkbox"/>	2
GC12EM4	EatEmUpTreeSpl		Eat'em Up Tree Splash	07/11/2007	1.01	FoodNinja	Not chose	1.0	1.5	Manitoba		<input type="checkbox"/>	2
GCY52	MunsonParkCach		The Munson Park cache	13/04/2004	1.04	razzputen	Regular	1.0	1.0	Manitoba		<input type="checkbox"/>	2
BB13T12	B1		B		1.06		Unknown	1.0	1.0	Nil		<input type="checkbox"/>	2
GCXDR5	HeistUntrained		Heist Untrained	22/09/2007	1.07	Devisor	Micro	3.0	2.0	Manitoba	14/07/2006	<input type="checkbox"/>	0
GC16MBE	HolyMuggles		Holy Muggles!	12/11/2007	1.07	Smygolian	Small	2.5	1.0	Manitoba		<input type="checkbox"/>	1
GCVBYP	BusStopsHere		The Bus Stops Here	01/09/2007	1.08	gmbrg	Micro	2.5	1.0	Manitoba	11/04/2006	<input checked="" type="checkbox"/>	1
GCP8TM	Tardis1		Tardis	27/10/2007	1.10	ertyu	Regular	2.0	2.0	Manitoba	15/06/2005	<input type="checkbox"/>	1
GCY8HP	BirdsEyeViewCa		Bird's Eye View Cache	04/11/2007	1.11	Anthiro	Small	1.0	1.0	Manitoba	10/04/2007	<input type="checkbox"/>	1
GCTFWP	MessageInABott		Message in a Bottle Opener	26/06/2006	1.11	cachegrab	Micro	2.0	1.5	Manitoba	01/03/2006	<input type="checkbox"/>	1
GC10AZ7	MBGAPubNiteGro		MBGA Pub Nite: Groundhog Day Editi	09/02/2007	1.11	MBGA	Not chose	1.0	1.5	Manitoba	02/02/2007	<input type="checkbox"/>	0
GC13AA3	SplashingThruT		Splashing thru the Jungle	07/10/2007	1.12	OHMIC	Micro	3.0	1.5	Manitoba	12/09/2007	<input type="checkbox"/>	3
EE13T12	E1		E		1.13		Unknown	1.0	1.0	Nil		<input type="checkbox"/>	2
GC15FXV	GoForAWalk		Go For a Walk	17/10/2007	1.16	Zef *	Small	1.5	2.5	Manitoba	12/09/2007	<input type="checkbox"/>	0
GCY8KD	MayorOfWinnipp		Mayor of Winnipeg - Daniel McInyre	13/05/2007	1.17	spaceman_baz	Micro	1.5	1.5	Manitoba	12/10/2006	<input type="checkbox"/>	1

Subset: None 2468 Shown (all waypoints) Centre point = Old Post Office Park Cache Counts: 1056 1393 34 552



Manitoba Geocaching Association

[www.mbgeocaching.ca](http://www.mbgeocaching.ca)

## GSAK Topics

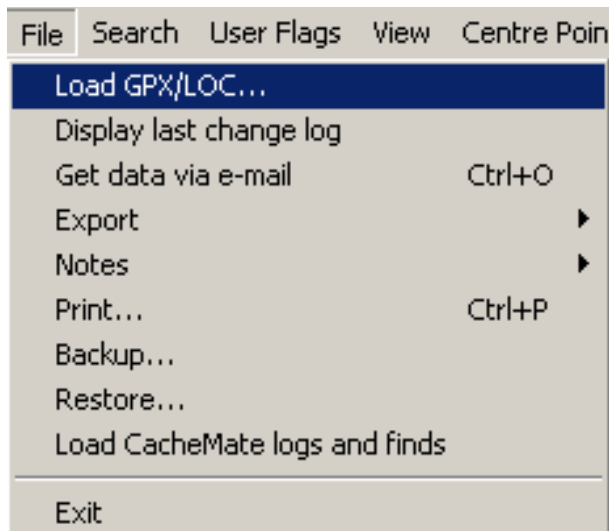
- Loading Pocket Queries from a File
- Using Smart Names
- Creating and Saving Filters
- Sending waypoints to a Garmin GPSr
- Sending cache logs and descriptions to CacheMate
- Exporting waypoints to MapSource
- Additional topics (time permitting)



Manitoba Geocaching Association

[www.mbgeocaching.ca](http://www.mbgeocaching.ca)

## GSAK: Loading Pocket Queries from File



- Have pocket query results stored as GPX or ZIP file(s) in a designated folder on your computer
- Launch GSAK and pick Load GPX/LOC from the File menu



# Manitoba Geocaching Association

www.mbgeocaching.ca

## GSAK: Loading Pocket Queries from File

**Load GPX/LOC/ZIP File** [X]

C:\Documents and Settings\turner\My Documents\TIM\GeoCaching\Waypoints\GSAK [Find]

File types to load (files will be loaded in file date order)  
 GPX    LOC    ZIP

Database: TurtleEggs

Load options

Use defaults

Database update options:  Newer only    Always    Existing Only    Add Only

How to handle the "additional" Geocaching.com waypoints:  Exclude    As normal waypoint    As child waypoint

Clear database before loading:  Warning: this will erase old data!

Found status update options (see help):  Always    Found Only    Never

Delete file(s) loaded when finished:  Yes

User Flag:  Set user flag    If matched, ONLY update user flag    Clear all user flags first

Load type:  Load file(s)    Folder

Settings: ... Last active [Save] [Delete]

[OK] [Cancel] [Help]





# Manitoba Geocaching Association

www.mbgeocaching.ca

## GSAK: Loading Pocket Queries from File

**Options** [X]

General | HTML | Locations | Display | Abbreviations | Keyboard shortcuts | Advanced

Default action when you double click on a waypoint name  
Show offline in browser

Method for matching placed (hidden) and found caches  
 Exact match  Wild card match  Owner ID#  RegEx  
369006

Database Folder  
C:\Documents and Settings\turner\My Documents\TIM [Find]

User Sort  
Current Value: 0 Increment By: 10

Automatically sort by distance after setting a centre point  
 Move to first waypoint after column sequence change  
 Show tips at start up  
 Suppress "Customize" popup hint  
 Automatically size status bar  
 Name/code search beep rather than zero records message  
 Suppress "Finished OK" messages

Status Attributes

	Colour	Priority
Unavailable/Archived	<input type="color" value="pink"/> Pink	1
Placed	<input type="color" value="lime"/> Lime	2
Found	<input type="color" value="yellow"/> Yellow	3
Not found	<input type="color" value="white"/> White	4

Highlight  Code  First column

Distance calculation  
 Kilometres  
 Miles

Calendar Start Day  
Sun

Automatic Backup  
 Enable  Prompt 1 Frequency  
C:\Documents and Settings\turner\My Documents\TIM [Find]

Sort column colour: [ ] Active row: [ ]  
User flag line color: [ ] [Grid font ...]

Smart Name  
Drop words: the;this;a;is;of;Conquista;Del;Mundo  
Length: 14 Keep chars: [ ]

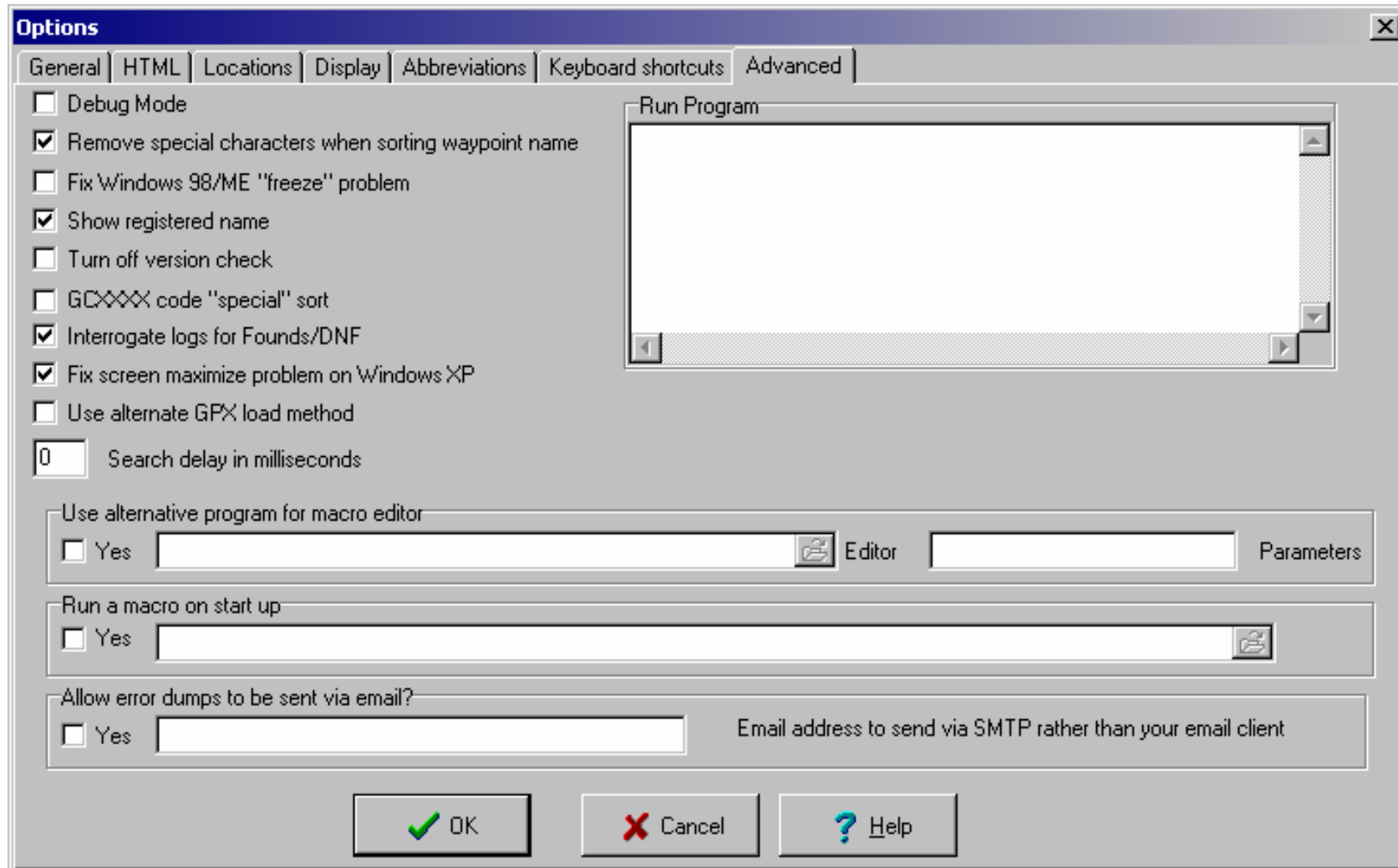
[OK] [Cancel] [Help]



# Manitoba Geocaching Association

www.mbgeocaching.ca

## GSAK: Loading Pocket Queries from File





# Manitoba Geocaching Association

www.mbgeocaching.ca

## GSAK: Using Smart Names

**Options**

General | HTML | Locations | Display | Abbreviations | Keyboard shortcuts | Advanced

Default action when you double click on a waypoint name  
Show offline in browser

Method for matching placed (hidden) and found caches  
 Exact match  Wild card match  Owner ID#  RegEx  
369006

Database Folder  
C:\Documents and Settings\turner\My Documents\TIM Find

User Sort  
Current Value 0 Increment By 10

Automatically sort by distance after setting a centre point  
 Move to first waypoint after column sequence change  
 Show tips at start up  
 Suppress "Customize" popup hint  
 Automatically size status bar  
 Name/code search beep rather than zero records message  
 Suppress "Finished OK" messages

Status Attributes

	Colour	Priority
Unavailable/Archived	<input type="color" value="Pink"/>	1
Placed	<input type="color" value="Lime"/>	2
Found	<input type="color" value="Yellow"/>	3
Not found	<input type="color" value="White"/>	4

Highlight  Code  First column

Distance calculation  
 Kilometres  
 Miles

Calendar Start Day  
Sun

Automatic Backup  
 Enable  Prompt 1 Frequency  
C:\Documents and Settings\turner\My Documents\TIM Find

Sort column colour  Active row

User flag line color

Grid font ...

Smart Name  
Drop words the;this;a;is;of;Conquista;Del;Mundo  
Length 14 Keep chars

OK Cancel Help



Manitoba Geocaching Association

[www.mbgeocaching.ca](http://www.mbgeocaching.ca)

## GSAK: Creating and Saving Filters

- A filtered list of GeoCaches enables you to define a subset of all the caches available in GSAK. This subset may then be viewed in GSAK and sent to your GPSr, PDA or mapping software
- Filters generally involve setting a centre point and establishing criteria for which caches are to be included
- GSAK's filter criteria options are extensive!



Manitoba Geocaching Association

[www.mbgeocaching.ca](http://www.mbgeocaching.ca)

## **GSAK: Creating and Saving Filters**

To illustrate creating and saving a filter, this example will be used:

*Show all the easy Traditional caches in Winnipeg that I have not found and did not have a DNF for the last two logs.*



Manitoba Geocaching Association

[www.mbgeocaching.ca](http://www.mbgeocaching.ca)

## GSAK: Creating and Saving Filters

- GSAK understands waypoints and their relation to each other, so to limit caches to Winnipeg define a "centre point cache" and the distance around it to include Winnipeg caches.
- The Old Post Office Park Cache (GCKYF3) will be used as the centre point with a distance of 13 km for this example.



Manitoba Geocaching Association

[www.mbgeocaching.ca](http://www.mbgeocaching.ca)

## GSAK: Creating and Saving Filters

Define a Centre Point:

- Locate the Old Post Office Park Cache in the GSAK cache listing and select it with the left mouse button (highlighting it blue).
- From the Waypoint menu pick Set as Centre Point



Manitoba Geocaching Association

www.mbgeocaching.ca

# GSAK: Creating and Saving Filters

From the  
Search menu,  
pick Filter...

Set Filter Centre point = Old Post Office Park Cache

General Dates Other Logs Arc/Poly

Select a saved filter Easy Winnipeg Caches Reverse filter

Cache name Contains

Full text search

Highlight HTML  Use RegEx

Where to Search  
 Everywhere  Selected Items Only  
 Logs  User Notes  Description

Distance Less than or equal to 13 Kilometres Radius

Found status  
 Found  Not Found  Exclude caches placed by you

Placed by Contains

Difficulty Less than or equal to 1.5

Terrain Less than or equal to 5.0

Available status  
 Archived  Temporarily Unavailable  Available

User flag  Set  Not set Has travel bug  Yes  No

User data Contains

User data 2 Contains

Has user notes  Yes  No First to find  Yes  No

Travel bug name Contains

Source Equal to

Owner Name Contains

Go Reset All Reset Tab Save Delete Cancel Help





# Manitoba Geocaching Association

www.mbgeocaching.ca

## GSAK: Creating and Saving Filters

**Set Filter** Centre point = Old Post Office Park Cache

General | Dates | Other | Logs | Arc/Poly

**Cache types**

<input checked="" type="checkbox"/> Traditional	<input type="checkbox"/> Virtual	<input type="checkbox"/> Project APE
<input type="checkbox"/> Multi	<input type="checkbox"/> Web Cam	<input type="checkbox"/> Mega Event
<input type="checkbox"/> LetterBox	<input type="checkbox"/> Mystery	
<input type="checkbox"/> CITO	<input type="checkbox"/> Benchmark	
<input type="checkbox"/> Event	<input type="checkbox"/> Other	
<input type="checkbox"/> Locationless	<input type="checkbox"/> Earth	

Clear All  
Set All

**Bearing**

<input checked="" type="checkbox"/> N	<input checked="" type="checkbox"/> NW	<input checked="" type="checkbox"/> NE	<input checked="" type="checkbox"/> E	Clear All
<input checked="" type="checkbox"/> S	<input checked="" type="checkbox"/> SW	<input checked="" type="checkbox"/> SE	<input checked="" type="checkbox"/> W	Set All

**Container size**

<input checked="" type="checkbox"/> Micro	<input checked="" type="checkbox"/> Small	<input checked="" type="checkbox"/> Regular	Clear All
<input checked="" type="checkbox"/> Large	<input checked="" type="checkbox"/> Other	Set All	

**Degrees** In range [ ]

**Geocaching Owner ID #** [ ] User Sort Not applicable [ ]

**State** Contains [ ]

**Country** Contains [ ]

**Locked**  Yes  No

**Corrected Coordinates**  Yes  No

**DNF (Did not find)**  Yes  No

**Watching this Cache**  Yes  No

**Code** Contains [ ]

**Found Count** Not applicable [ ]

**Has child waypoints**  Yes  No

Go Reset All Reset Tab Save Delete Cancel Help



# Manitoba Geocaching Association

www.mbgeocaching.ca

## GSAK: Creating and Saving Filters

**Set Filter** Centre point = Old Post Office Park Cache

General | Dates | Other | **Logs** | Arc/Poly

Log Date:

Logs to search:   Found  Not Found  All notes

Include/Exclude:  This will include/exclude the cache in your subset if the following conditions are met

Required Count:

Log Types:  Found  Not Found  Needs archiving note  All other notes

Logged by:  (and log is by a certain person)

Exact match  Allow wild card match  Use go.com logon ID#

Details:

Go Reset All Reset Tab Save Delete Cancel Help



Manitoba Geocaching Association

[www.mbgeocaching.ca](http://www.mbgeocaching.ca)

## GSAK: Creating and Saving Filters

- Tools \ Options... \ General Tab
  - Automatically sort by distance after setting a centre point
- Search -> Cancel Filter
  - Removes any filters and shows all caches in the database
- Select a saved filter from the main GSAK window
  - Contains a drop down list of all filters that have been saved



Manitoba Geocaching Association

[www.mbgeocaching.ca](http://www.mbgeocaching.ca)

# GSAK: Creating and Saving Filters

- A CacheMate export will only export the filtered subset of caches to the PDA
- A MapSource export will only use the filtered subset of caches when creating a MapSource file
- Sending waypoints to the GPS will only send the filtered subset of caches to the GPSr



Manitoba Geocaching Association

[www.mbgeocaching.ca](http://www.mbgeocaching.ca)

## **GSAK: Send Waypoints to Garmin GPSr**

- Benefits of GSAK waypoint exports to the GPSr:
  - Use SmartNames instead of GCXXXX
  - Use customized icons to identify Traditional, Multi, Mystery, Found, Unfound, Archived, etc. caches on your GPSr
  - Have the decrypted hint on your GPSr



Manitoba Geocaching Association

[www.mbgeocaching.ca](http://www.mbgeocaching.ca)

## GSAK: Send Waypoints to Garmin GPSr

Setup the GPS in GSAK (one time):

- From the GPS menu, pick Setup
  - For GPS Brand pick **Garmin** from the drop down list
  - Check GPSr is **USB**
  - Enter **1000** for the **Maximum waypoints** for GPS. The Garmin GPSMAP 60 series GPSr can store a maximum of 1,000 waypoints.



# Manitoba Geocaching Association

www.mbgeocaching.ca

## GSAK: Send Waypoints to Garmin GPSr

From the  
GPS menu,  
pick Send  
Waypoints ...

**Send Waypoints to GPS** (Total = 75)

GPS Symbols (Not all symbols are supported on all GPSs)

- Traditional+Found = Custom 1; Traditional Found
- Traditional+Not Found = Custom 0; Traditional
- Traditional+Placed = Custom 1; Traditional Found
- Traditional+Archived = Custom 18; Traditional Archived
- Multi+Found = Custom 4; Multi Found
- Multi+Not Found = Custom 3; Multi
- Multi+Placed = Custom 4; Multi Found
- Multi+Archived = Custom 19; Multi Archived
- LetterBox+Found = Custom 10; Letterbox Found
- LetterBox+Not Found = Custom 9; Letterbox
- LetterBox+Placed = Custom 10; Letterbox Found

Use macro for symbol generation

Change Symbols

Send Options  Use Defaults

Include additional child waypoints  
 Yes  Only include if flagged

Maximum waypoints to send  
(Leave blank to send all)

Waypoint name  
You can build the waypoint name using tags (see help)  
  
Maximum characters

Problem characters to remove from description

Waypoint description format (comments)

Force all data sent to GPS to be Uppercase  Turn on debug mode

Settings  
 Save Delete

Send GPSr Setup Cancel Help

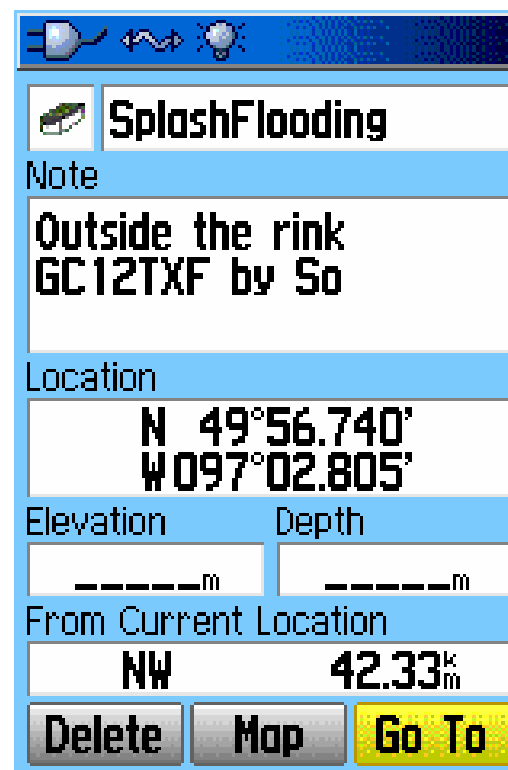


Manitoba Geocaching Association

[www.mbgeocaching.ca](http://www.mbgeocaching.ca)

## GSAK: Send to Garmin GPSr

As seen on the  
GPSr:







Manitoba Geocaching Association

[www.mbgeocaching.ca](http://www.mbgeocaching.ca)

## **GSAK: Export to CacheMate**

**Go paperless!**

CacheMate allows you to easily view cache descriptions, hints and logs on your Palm OS based PDA

<http://www.smittyware.com/palm/cachemate/>



# Manitoba Geocaching Association

www.mbgeocaching.ca

## GSAK: Export to CacheMate

From  
the file  
menu,  
pick  
Export  
Cache  
Mate  
PDB  
File...

**Export CacheMate PDB File**

**Note: This export is for Palm users only, for Pocket PC CacheMate use File=>Export=>GPX**

PDB file to create  
C:\Documents and Settings\turner\My Documents\TIM\GeoCaching\Wayp...  
Select from most recent  
File=CacheMate.pdb Path=C:\Documents and Settings\turner\My Docum...

CacheMate options  Use defaults

CacheMate Waypoint (code/smart name)  
You can build the waypoint using tags (see help) Maximum characters  
%code 15

CacheMate Name  
You can build the waypoint name using tags (see help) Problem characters to remove  
%smart

Include additional child waypoints  
 Yes  Only include if flagged

Maximum waypoints to send  
(Leave blank to send all)

CacheLogs  
No Limit Limit number of logs to export  
 Always include my logs

**Install to palm after conversion**  
The following options allow inclusion of extra information for caches generated from GSAK. When selected, this information will be made part of the description in CacheMate.

State/Country  Container Type  Travel bugs  Decode hints by default  Include logs notes template for items taken/left  
 Cache Status  Date Hidden  Cache Owner  Enable long cache descriptions (CacheMate 2.1 or later required)

Extra information to show as first log  
 Exclude user notes log

Settings  
... Last active

Save Delete

Generate Cancel Help

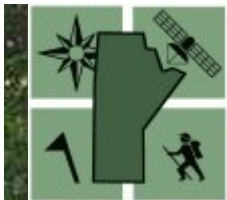


Manitoba Geocaching Association

[www.mbgeocaching.ca](http://www.mbgeocaching.ca)

## GSAK: Export to MapSource

- MapSource is Garmin's mapping application for viewing maps and waypoints and transferring these to and from the Garmin GPSr.
- Once you've created a filter in GSAK you can export it to MapSource to visualize it



Manitoba Geocaching Association

[www.mbgeocaching.ca](http://www.mbgeocaching.ca)

## **GSAK: Export to MapSource**

- MapSource should be upgraded to the latest version first to be fully compatible with GSAK. MapSource is a free upgrade (the maps are not).
- MapSource City Navigator sells for approximately CDN \$129.00

<http://www8.garmin.com/cartography/>



Manitoba Geocaching Association

[www.mbgeocaching.ca](http://www.mbgeocaching.ca)

## GSAK: Export to MapSource

- MapSource Features:

- Accepts a customizable comment field from GSAK
- Accepts customizable symbols
- The GeoCache link to [Geocaching.com](http://Geocaching.com) is also automatically exported and can be launched from the waypoint properties in MapSource



Manitoba Geocaching Association

www.mbgeocaching.ca

# GSAK: Export to MapSource

From the file  
menu, pick  
Export  
MapSource  
File...

The screenshot shows the 'Export to MapSource MPS/GDB file' dialog box. The title bar indicates '(Total = 75)'. The 'File to create' field is set to 'C:\Documents and Settings\attuner\My Documents\TIM\GeoCaching\Waypoints\UnFou'. The 'Select from most recent' dropdown shows 'File=UnFound.gdb Path=C:\Documents and Settings\attuner\My Documents\TIM\GeoCa'. The 'GPS symbols' section has 'Use same icons as GPS send' checked. A list of symbols is shown, including 'Traditional+Found = Geocache Found', 'Traditional+Not Found = Geocache', 'Traditional+Placed = Geocache', 'Traditional+Archived = Geocache', 'Multi+Found = Geocache Found', 'Multi+Not Found = Multi-Cache', 'Multi+Placed = Geocache Found', 'Multi+Archived = Geocache Found', and 'LetterBox+Found = Ball Park'. A 'Change' button is next to the list. 'Use macro for symbol generation' is unchecked. The 'Options' section has 'Use defaults' unchecked. 'Include additional child waypoints' has 'Yes' and 'Only include if flagged' unchecked. 'Maximum waypoints to send' is set to 0. 'Waypoint name' is set to '%smart' with 'Maximum characters' set to 14. 'Cache description format' is '%Name by %By (%Dif/%Ter)'. 'Problem characters to remove from description' is empty. 'MapSource version' is '6 - GDB', 'Category' is 'No category', and 'Load file into MapSource after generation?' is checked. 'MapSource Link' is 'Default' with a 'xref.txt' button. The 'Settings' section has 'Last active' selected. At the bottom are 'Generate', 'Cancel', and 'Help' buttons.



Manitoba Geocaching Association

www.mbgeocaching.ca

# GSAK: Export to MapSource

As seen from  
MapSource:

The screenshot shows the 'Waypoint Properties' dialog box in MapSource. The dialog has a title bar with 'Waypoint Properties' and a close button. The main area contains several fields and controls:

- Name:** A text box containing 'DarcysDoggiePl'.
- Symbol:** A dropdown menu showing a dog icon.
- Position:** A text box containing 'N49 50.996 W97 14.859'.
- Altitude:** A text box, a unit dropdown set to 'm', and a checked checkbox labeled 'Unknown'.
- Depth:** A text box, a unit dropdown set to 'm', and a checked checkbox labeled 'Unknown'.
- Proximity:** A text box, a unit dropdown set to 'km', and a checked checkbox labeled 'Unknown'.
- Temperature:** A text box, a unit dropdown set to '°C', and a checked checkbox labeled 'Unknown'.
- Comment:** A text area containing 'Darcy's Doggie Pleasures'.
- Display:** A dropdown menu set to 'Symbol & Name'.
- Categories:** A list box with 12 categories, each with an unchecked checkbox.
- Date Modified:** A text box containing '10/10/2007 1:00:00 AM'.
- Links:** A section with a 'File/URL:' label, a text box containing 'http://www.geocaching.com/seek/cacl', a dropdown menu, a refresh icon, and a 'Browse...' button.

On the right side of the dialog, there are four buttons: 'OK', 'Cancel', 'Show On Map', and 'Fewer Details'.

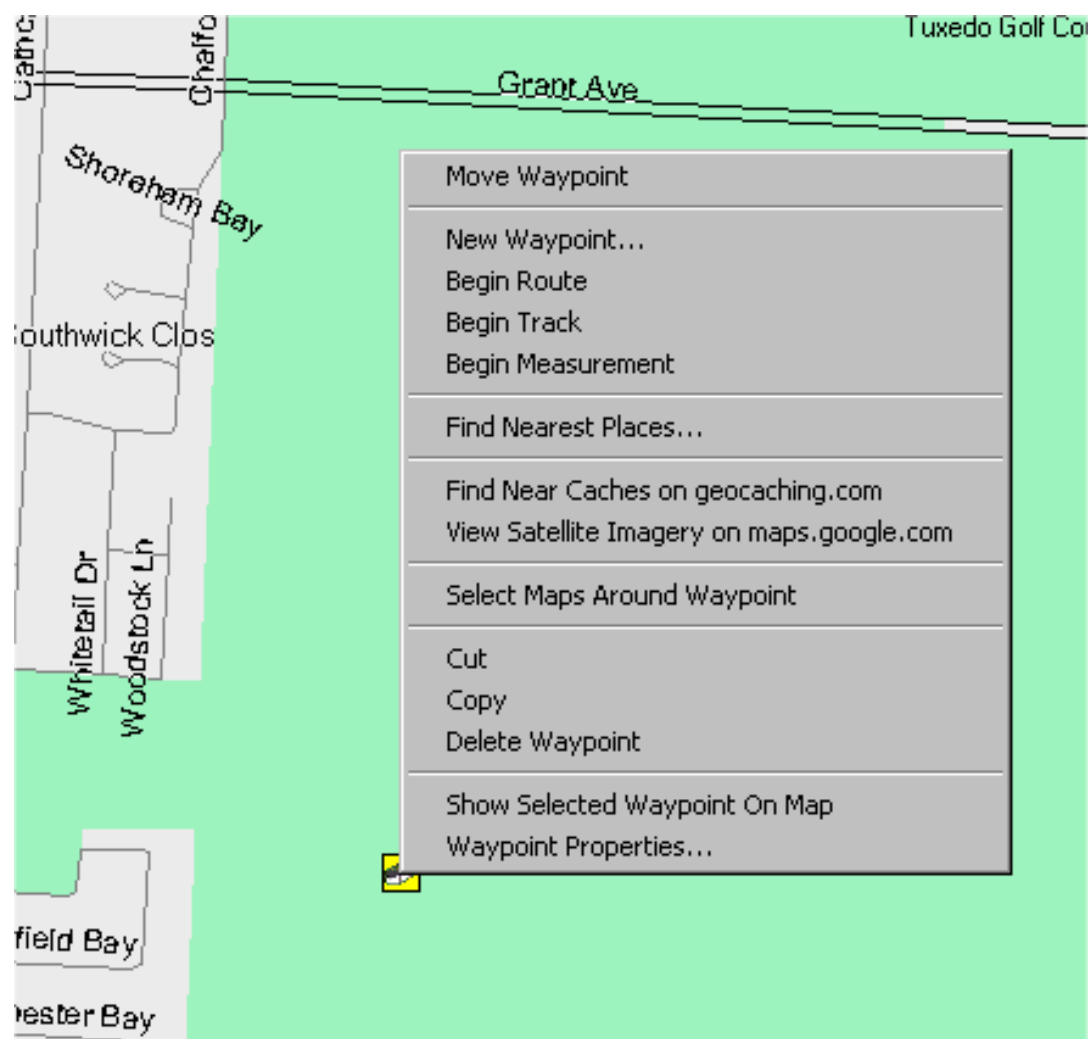


Manitoba Geocaching Association

[www.mbgeocaching.ca](http://www.mbgeocaching.ca)

## GSAK: Export to MapSource

MapSource  
integration with  
[Geocaching.com](http://Geocaching.com)  
and  
[maps.google.com](http://maps.google.com)





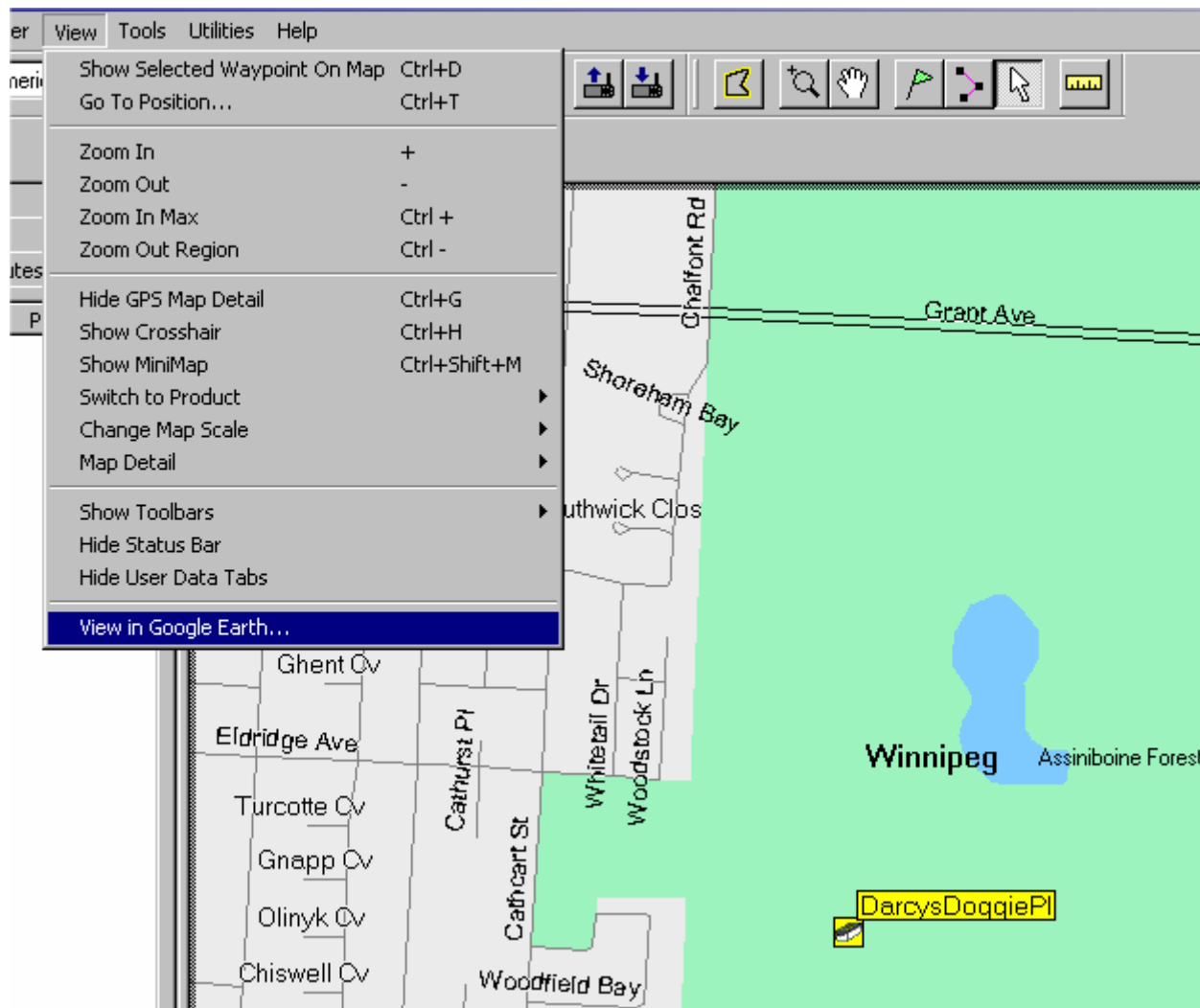


Manitoba Geocaching Association

[www.mbgeocaching.ca](http://www.mbgeocaching.ca)

# GSAK: Export to MapSource

MapSource  
integration  
with Google  
Earth





Manitoba Geocaching Association

[www.mbgeocaching.ca](http://www.mbgeocaching.ca)

## CacheMate

- CacheMate allows you to view cache descriptions, hints and logs on your Palm OS based PDA
- CacheMate uses a very friendly type down table of contents with the same SmartNames as GSAK and your GPSr - but it helps to know Graffiti!

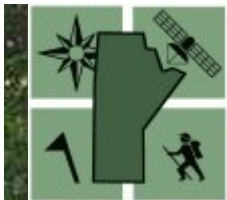


Manitoba Geocaching Association

[www.mbgeocaching.ca](http://www.mbgeocaching.ca)

## CacheMate

- Once you tap on the cache name from the contents, you are able to view all the cache information and logs from one "overview" page
- CacheMate functionality also include "Nearest Cache" and the ability to write logs through CacheMate and transfer them back to your computer later.
  - CacheMate is US \$8 to register



Manitoba Geocaching Association

[www.mbgeocaching.ca](http://www.mbgeocaching.ca)

# CacheMate Topics

Loading an export from GSAK

Customizing the display



Manitoba Geocaching Association

[www.mbgeocaching.ca](http://www.mbgeocaching.ca)

## CacheMate: Loading from GSAK

- Once you've completed the GSAK CacheMate export and HotSync'd your PDA, the file is ready to be loaded into the CacheMate database

Buy it at [www.LinkerSOFT.com](http://www.LinkerSOFT.com)

File/Database:  
CacheMate

Database: ▼ Default

Category: ▼ Unfiled

All new records from the named file will be created under the selected category.

Tap OK to load the file.

Tap OK once the records are imported and you'll be taken to the Table of Contents



Manitoba Geocaching Association

www.mbgeocaching.ca

## CacheMate: Customizing Display

- From the CacheMate Table of Contents, bring up the menu and go to List Options under Option

**CacheMate** ▼ All

T	AllYourCacheAr (1.5/1)	▲
T	AnimalSafari (1/2)	
T	BadWolf (1.5/1.5)	
T	BergensGraveya (1.5/1.5)	
T	CacheOnAHotTin (1/1.5)	
T	CANADA2 (1.5/1.5)	
T	CareBearsSist1 (1/1)	
Buy it at www.LinkeSOFT.com		
T	CountryClubSpl (1.5/1.5)	
T	Courthouse1 (1.5/2)	
T	DarcysDoggiePl (1.5/2)	

Sort By: **Name** Wpt •

Buy it at www.LinkeSOFT.com ▼ All

T	CANADA2 (1.5/1.5)	▲
T	CareBearsSist1 (1/1)	

**List Options** ⓘ

Extra info: ▼ Diff/Ter

- Show travel bugs
- Display waypoint as name
  - When sorted by waypoint
- Show status/type columns
- Color highlighting (if supported)



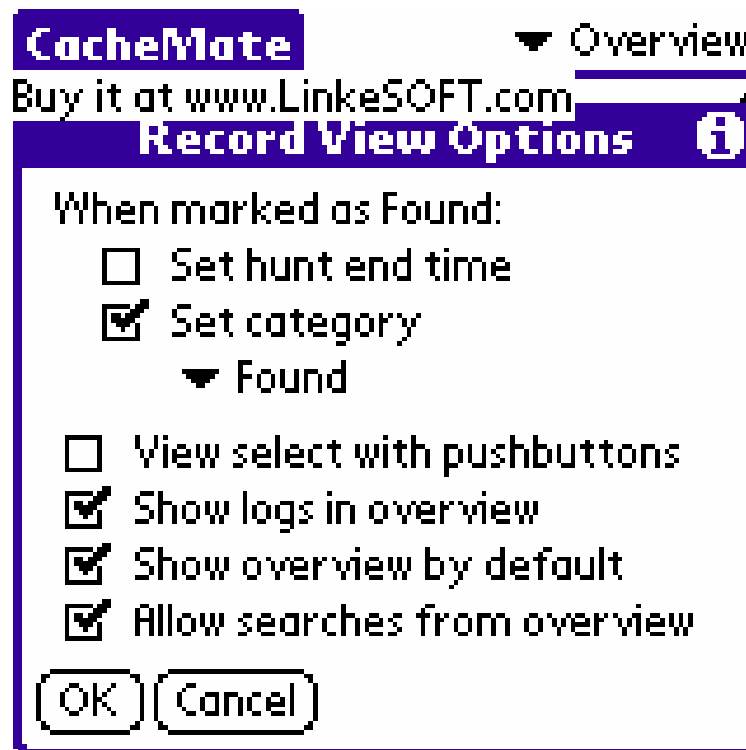
Manitoba Geocaching Association

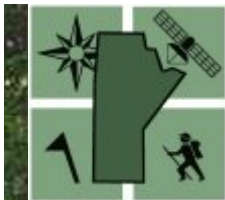
[www.mbgeocaching.ca](http://www.mbgeocaching.ca)

## CacheMate: Customizing Display

- Tap a cache from the list and then bring up the menu and go to View Options under Option

This configures CacheMate to show all the related cache information directly from the list in one "overview" without changing screens





Manitoba Geocaching Association

[www.mbgeocaching.ca](http://www.mbgeocaching.ca)

## CacheMate: Customizing Display

**CacheMate**

▼ Overview

303Pathfinders (GC16PEX)  
N 50° 00.389 W 096° 52.560  
Traditional Cache (D2/T2)

Owner: arnieve4vu

Date: 2007/10/10

Location: Manitoba, Canada

Container: Regular

Status: Active

Buy it at [www.LinkesOFT.com](http://www.LinkesOFT.com)  
between campground and lake

Done

**CacheMate**

— Overview

Buy it at [www.LinkesOFT.com](http://www.LinkesOFT.com)

2007/11/04 - [pji5108 \(Found it\)](#)

1 of 2 found during a long walk this  
afternoon - TFTC

2007/11/04 - [mcphee \(Found it\)](#)

If possible, bring along some nyger  
seeds to truly enjoy this spot. The  
chickadees are very tame and will  
eat right out of your hand. Thanks  
for the cache.

Done





Manitoba Geocaching Association

[www.mbgeocaching.ca](http://www.mbgeocaching.ca)

## Using Custom Icons

Custom icons can be used to identify the different cache types and statuses from your Garmin GPSr and MapSource

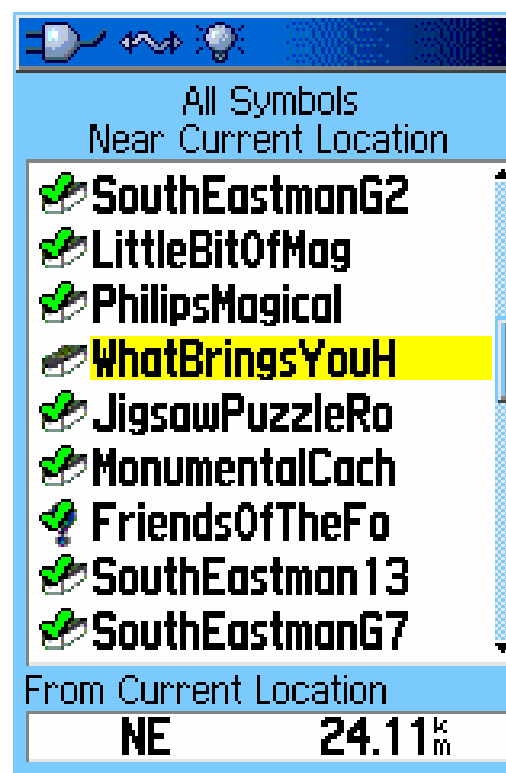
Customizing steps need to be taken on the GPSr, MapSource and GSAK applications



Manitoba Geocaching Association

www.mbgeocaching.ca

# Using Custom Icons - GPSr





Manitoba Geocaching Association

[www.mbgeocaching.ca](http://www.mbgeocaching.ca)

# Using Custom Icons - GPSr

Installing the custom icons on the  
Garmin GPSMAP 60 series GPSr alters  
it's GeoCaching functionality.



# Manitoba Geocaching Association

[www.mbgeocaching.ca](http://www.mbgeocaching.ca)

## Using Custom Icons - GPSr

Geocache Symbols

 Find  Found

Calendar Entry When Found

Yes

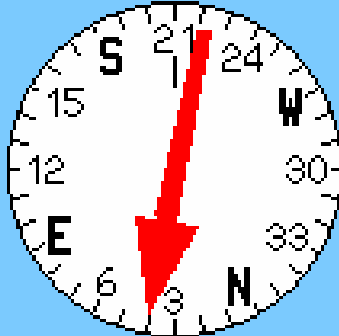
Find hidden treasures using GPS coordinates posted on the Internet by those hiding the cache. Find the cache, fill out the logbook, take something out, put something back in, and return the cache. Visit <http://www.garmin.com/outdoor/geocaching/> for more details.

Speed **0.0** <sup>k</sup>/<sub>h</sub>

Dist To Next **24.1** <sup>k</sup>/<sub>m</sub>

Accuracy **7** <sup>m</sup>

Time To Next **29** <sup>HRS</sup> **17** <sup>MIN</sup>



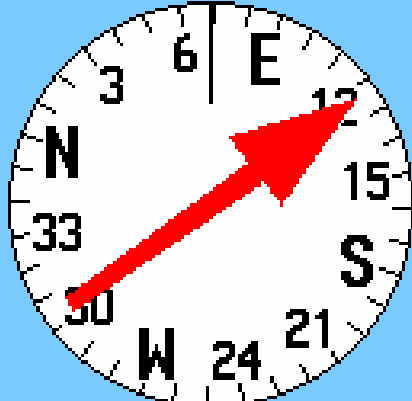
**Found** **Note** **Stop**

Speed **0.0** <sup>k</sup>/<sub>h</sub>

Dist To Next **24.9** <sup>k</sup>/<sub>m</sub>

Accuracy **8** <sup>m</sup>

Time To Next **21** <sup>HRS</sup> **41** <sup>MIN</sup>



**Found** **Note** **Stop**



Manitoba Geocaching Association

[www.mbgeocaching.ca](http://www.mbgeocaching.ca)

## Installing Custom Icons on the Garmin GPSMAP 60 series

- Update the GPSr to the latest firmware
- Download **xImage** from [www.garmin.com](http://www.garmin.com) and use it to send custom waypoint symbol images to GPSr.



Manitoba Geocaching Association

[www.mbgeocaching.ca](http://www.mbgeocaching.ca)

## Installing Custom Icons on the Garmin GPSMAP 60 series

- The Garmin GPSMAP 60 series currently supports **24 custom waypoints** and they must be of the format:
  - **Name:** "Waypoint Symbol 000.bmp" to "Waypoint Symbol 023.bmp"
  - **Size:** 16 x 16 pixels
  - **Colour Depth:** 256 colours.



**Manitoba Geocaching Association**

[www.mbgeocaching.ca](http://www.mbgeocaching.ca)

## **Choose the GeoCache Icons on the Garmin GPSMAP 60 series**

- **Go to GeoCache Setup from the Find GeoCache list**
  - **Select the GeoCache Symbol for Find and change it to the Custom Symbol for an unfound Traditional cache**
  - **Select the GeoCache Symbol for Found and change it to the Custom Symbol for a found Traditional cache**



**Manitoba Geocaching Association**

[www.mbgeocaching.ca](http://www.mbgeocaching.ca)

## **Choose the GeoCache Icons on the Garmin GPSMAP 60 series**

- The Find GeoCache functionality will now only work for Traditional GeoCaches. Other cache types will show up under the Find Waypoints list
- When Navigating with the compass, the Note option and Find Next will only be available for traditional caches.





Manitoba Geocaching Association

[www.mbgeocaching.ca](http://www.mbgeocaching.ca)

# Using Custom Icons - MapSource

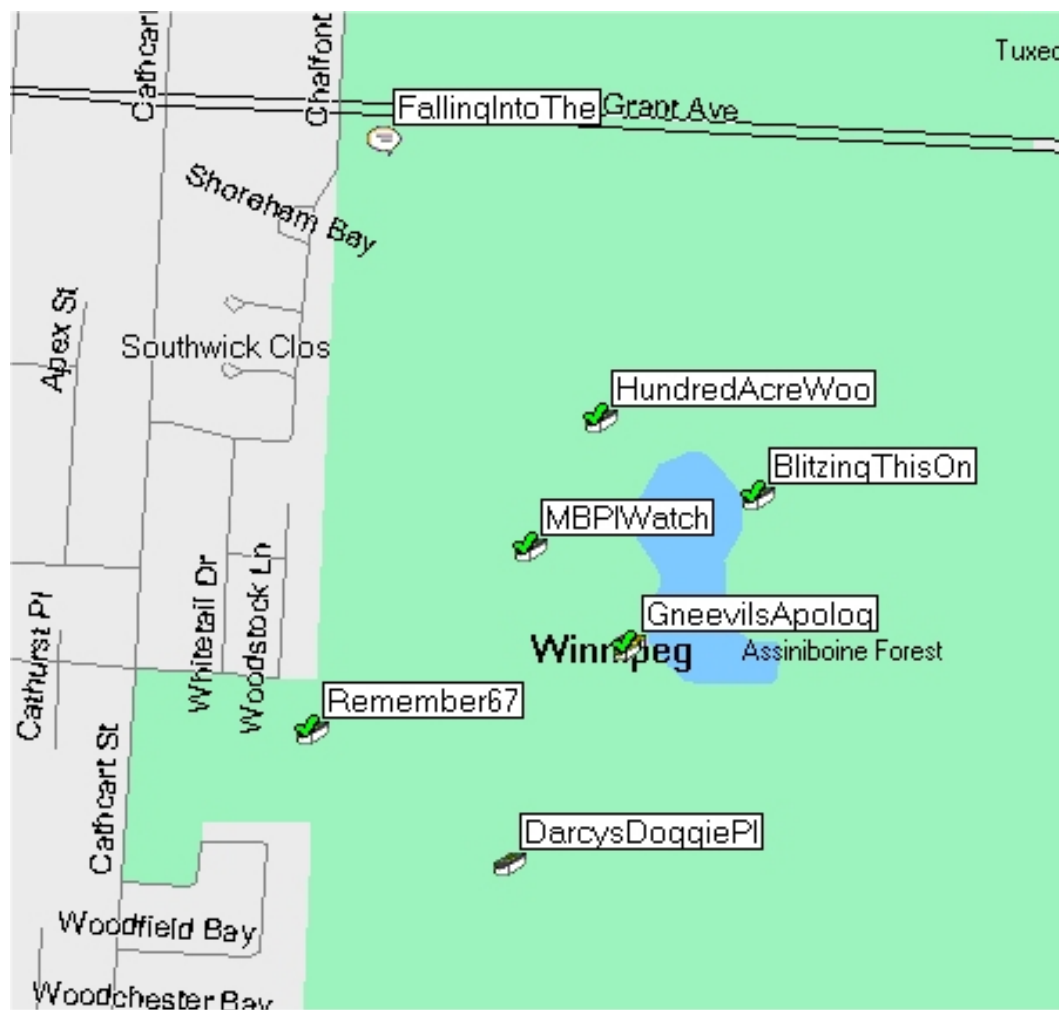
Custom icons can also be used with  
Garmin MapSource maps to identify the  
different cache types and statuses



Manitoba Geocaching Association

[www.mbgeocaching.ca](http://www.mbgeocaching.ca)

# Using Custom Icons - MapSource





Manitoba Geocaching Association

[www.mbgeocaching.ca](http://www.mbgeocaching.ca)

# Using Custom Icons - MapSource

Update MapSource to the latest  
firmware

Place the custom icons in the folder:

`My Documents\My Garmin\Custom Waypoint Symbols`



**Manitoba Geocaching Association**

[www.mbgeocaching.ca](http://www.mbgeocaching.ca)

# Using Custom Icons - MapSource

MapSource supports up to **64 custom waypoint symbols** and they must be of the format:

**Name:** "000.bmp" to "063.bmp"

**Size:** 16 x 16 pixels

**Colour Depth:** 256 colours



Manitoba Geocaching Association

[www.mbgeocaching.ca](http://www.mbgeocaching.ca)

## Using Custom Icons - GSAK

*GSAK requires the GarminOther.txt file to identify the custom icons available*



Manitoba Geocaching Association

[www.mbgeocaching.ca](http://www.mbgeocaching.ca)

## Using Custom Icons - GSAK

In addition, *GSAK* requires that you map the custom icons to the appropriate cache types in *GPS* -> Send waypoints ... -> *GPS Symbols*

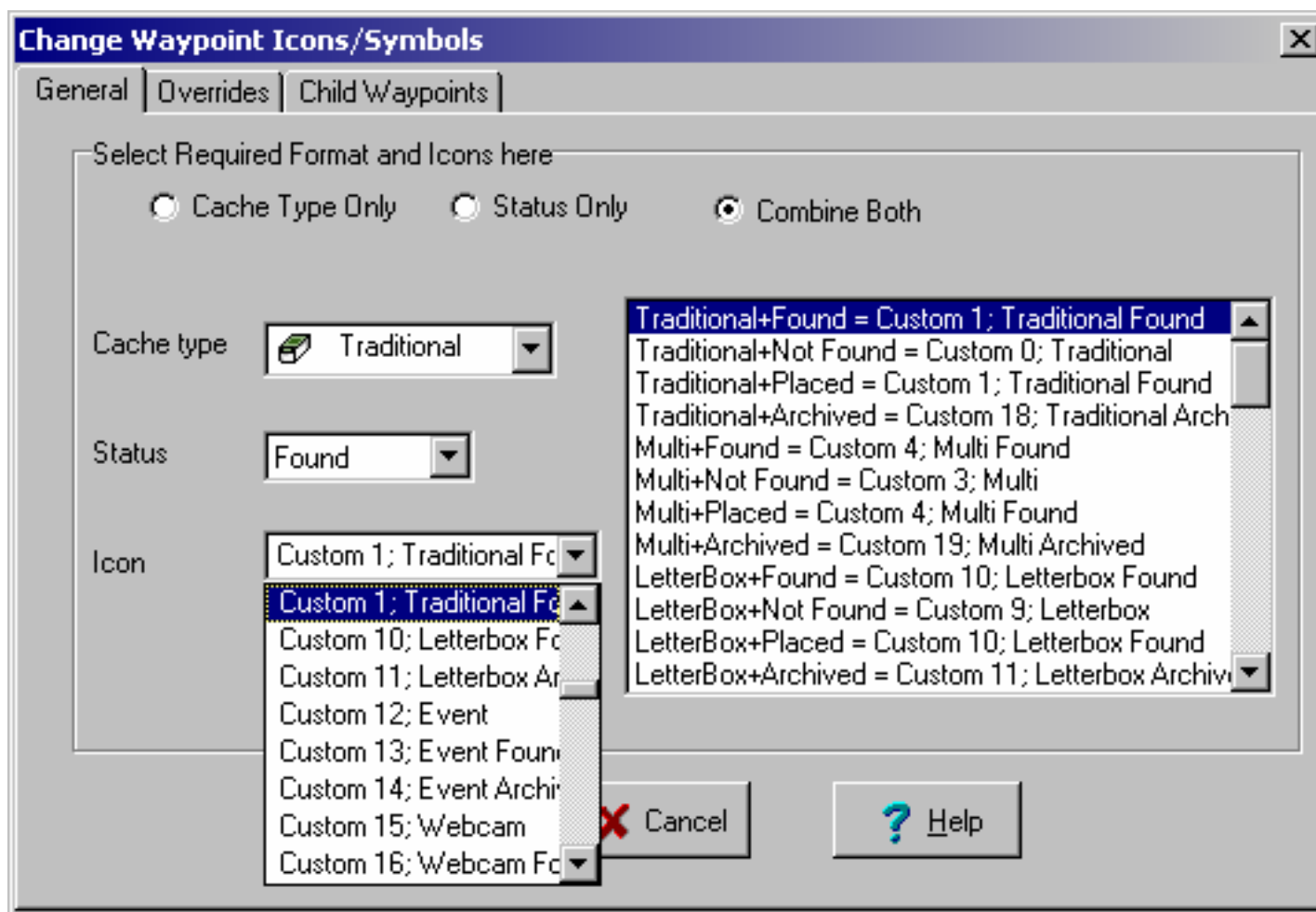
This is the laborious step, but the good news is you only need to do it once and it applies to *MapSource* exports as well!



Manitoba Geocaching Association

www.mbgeocaching.ca

# Using Custom Icons - GSAK





Manitoba Geocaching Association

[www.mbgeocaching.ca](http://www.mbgeocaching.ca)

# Using Custom Icons - GSAK

Or, if you want to do it the easy way:

- Go to the **GSAK** forums <http://gsak.net/board/index.php?>
- Go to the **Macro Library** section
- Go to **Imports & Exports** and then **Garmin**
- Open the "**Garmin Custom Symbol Export**" topic
- Scroll to the end and download the **Garmin\_Custom\_Symbol\_Export.zip** file
- Open this file and you'll find all the custom icons, the **garminother.txt** file, detailed instructions and a macro that automates the process of mapping the custom icons to the appropriate cache types in **GSAK**





Manitoba Geocaching Association

[www.mbgeocaching.ca](http://www.mbgeocaching.ca)

## **GSAK: Additional topics (time permitting)**

- Special Pocket Queries:
  - My Finds
  - grnbrg's "Archived caches in Manitoba" bookmark list
- Identifying Your FTFs
- Split Screen View
- Automatic Backups
- Loading Pocket Queries from e-mail
- Macros
  - Reports
- Identifying Archived Caches
- Cache Status Check



Manitoba Geocaching Association

[www.mbgeocaching.ca](http://www.mbgeocaching.ca)

# Geocaching Software Training

Be sure to visit the MBGA Discussion Forums and ask questions or post your comments

*If you've got a question, others do to!*

<http://www.mbgeocaching.ca/>

Electronic copies of the handouts are located under Resources\MBGA Tutorials

If you'd like a copy of the presentation, e-mail: [president@mbgeocaching.ca](mailto:president@mbgeocaching.ca)

## Thanks for coming!