

Waypoint Management: Loading Pocket Queries into GSAK from File

This tutorial describes how to load Pocket Queries results that have been received via e-mail into Geocaching Swiss Army Knife (GSAK). GSAK is a database of GeoCaches (waypoints) and their associated logs that you may view and manage.

Requirements:

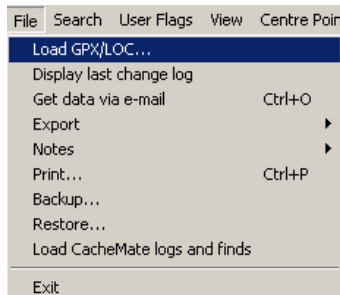
- Premium Membership at Geocaching.com (required to produce Pocket Queries)
 - For information on becoming a Premium Member visit <http://www.geocaching.com/subscribe/>
- GeoCaching Swiss Army Knife (GSAK) 7.1.1.32 (or higher)
 - For information on downloading and installing GSAK visit <http://gsak.net/>

Prerequisites:

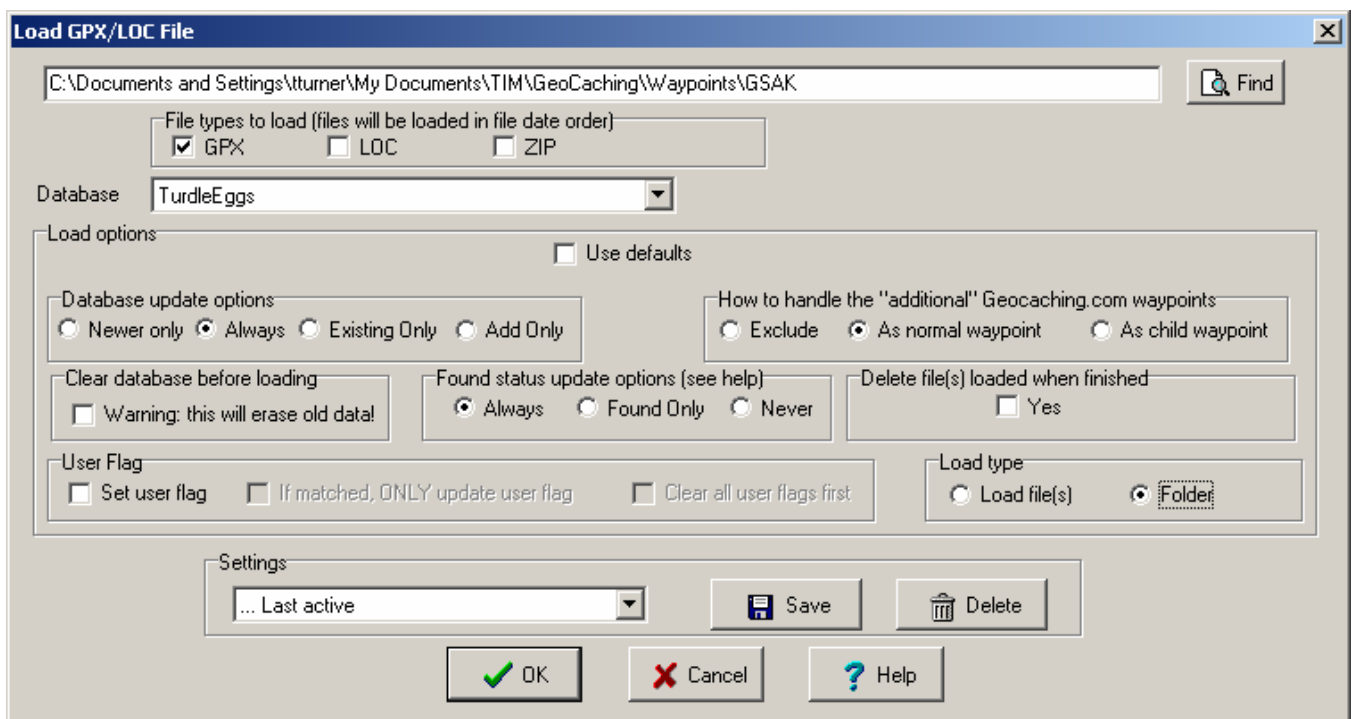
- Have pocket query results stored as GPX or ZIP file(s) in a designated folder on the local hard drive

Loading Pocket Queries into GSAK from File

- Launch GSAK and pick **Load GPX/LOC** from the **File** menu



- Pick **Load type** as **Folder** and use the Find button to navigate to the folder where your Pocket Query results are.



Explanation of Load options:

- **File Types to Load**
Choose **GPX** and GSAK will load any GPX files it finds in the folder you specified. If you choose to leave your pocket query results ZIPped, pick **ZIP**.
- **Database**
This is normally **Default**
- **Database update options**
Choose **Newer Only** to have waypoint information updated in the GSAK database only if the GPX file you are loading is newer than the last GPX date in the database. If you have some older GPX files you wish to load, choose **Always** to make sure the GPX/LOC file will update the offline database regardless how old the data is.
- **How to handle additional waypoints**
Choose **As normal waypoint** to have additional waypoints such as stages of a puzzle or parking coordinates stored as normal waypoints. You may then choose later if you wish to treat these additional waypoints through GSAK filters and if they will be sent to your GPSr.
- **Clear database before loading**
Leave this box **unchecked**. One of the great benefits of having a GSAK database is to keep a history of Geocache logs and subsequently view them or send them to your PDA. If you don't want to keep a history, check the box.
- **Found status**
Choose **Always**. The found status of a cache in the database is always updated to whatever is in the GPX file you are about to load. If selected in options (below), GSAK will interrogate the logs after a GPX load to update your found status and count.
- **Delete file(s) loaded when finished**
Leave this box **unchecked**. If you want GSAK to remove the source files after loading them into GSAK check this box. *Caution:* Deleted files are not sent to the recycle bin - you cannot undo this process.
- **Load Type**
Set this to **folder** if you have multiple files to load, other wise leave it at Load File

Related Options

- **Tools\Options...\General Tab**
 - **Method for Matching Placed and Found Caches**
Pick **Owner ID#** and enter your ID. This same method is used when interrogating logs to adjust your found count and other information.
 - **Suppress finished OK messages**
Check this box if you don't want to see the ""Finished OK" popup
- **Tools\Options...\Advanced tab**
 - **Interrogate Logs for Finds/DNF etc**
Check this box. GSAK will interrogate the logs after a GPX load to update your found status and count. If GSAK finds a "found log" by you, it will then update the cache as "found" regardless what the status might be from the incoming GPX file. This also updates the Found by me date, DNF status and DNF date.

For more information

- Use the GSAK Help menus. They're excellent
- Use the GSAK online forums to discuss GSAK topics with other users. Visit <http://www.gsak.net/board/>
- Post your questions to the MBGA online forum. Visit <http://www.mbgeocaching.ca/forum/index.php>
- Waypoint Management: Using Smart Names in GSAK
- Waypoint Management: Creating and Saving Filters in GSAK
- Waypoint Management: Send to Garmin GPSr using Description Field from GSAK
- Waypoint Management: Export to CacheMate from GSAK
- Waypoint Management: Export to MapSource from GSAK
- Waypoint Management: Using Custom Icons in GSAK, MapSource and a Garmin GPSr